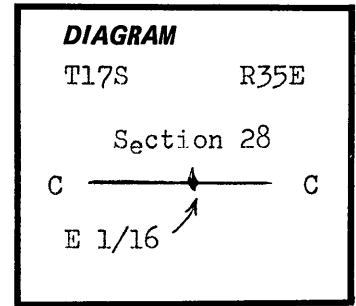


CERTIFIED RECORD OF LAND CORNER MONUMENTATION

History of original corner establishment:

Not previously established



Description of corner evidence found:

A steel fence post with location tags lie 30 ft. north and 60 ft. east of true corner location. A blazed line runs north and west from this point. Blazed lines evidently run by Bert Udell (no date) as scribed on location tags.

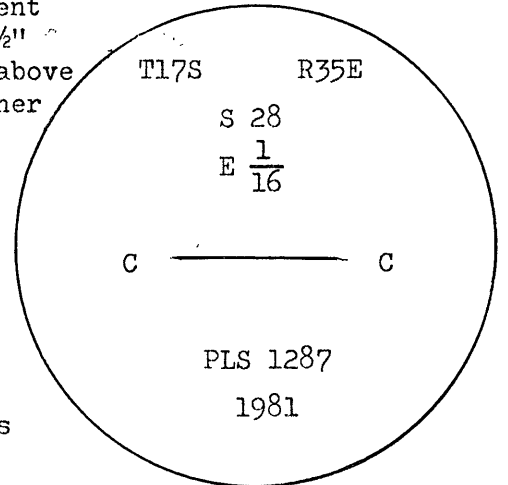
Description of monument and accessories I established to perpetuate the original location of this corner:

At the corner location I set a standard F.S. aluminum monument consisting of a 3" disk mounted on a 2 1/2 x 30" pipe with a 4 x 4 1/2" footplate buried 24 inches deep with six inches protruding above the ground. Disk on the monument is stamped as shown. Corner set 6/1/82 and witnessed by P. Zabala and S. Moss.

New BT's established :-

- a 9" P. Pine bears S. 59° E., 26.9 ft distant, scribed E 1/16 S 28, BT
- a 8" P. Pine bears N. 33° W., 6.8 ft distant, scribed E 1/16 S 28, BT

Both BT's are banded with red paint, carry BT and Attention signs and have brass disks stamped PLS 1287 nailed to the base of the BT blaze. Steel fence posts with boundary signs lie 3 ft north and 3 ft west of corner monument.



REGISTERED
PROFESSIONAL
LAND SURVEYOR

Charles F. Palmer
OREGON
SEPTEMBER 23, 1977
CHARLES F. PALMER
1 2 8 7

Office of..... *Surveyor* County of..... *Grant*
State of..... *Oregon* I hereby certify that the within instrument was filed in this office
for record on the..... *23* day of..... *Nov* 19..... *82*
..... *Robert D. Dargatzis* by.....
(COUNTY OFFICIAL) (DEPUTY)